

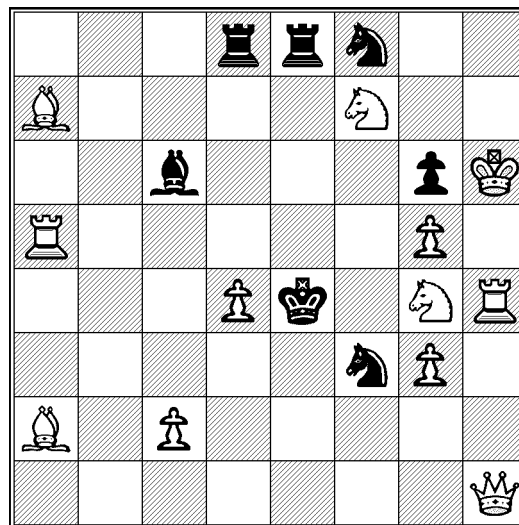
## The Barry Barnes Memorial Tourney

Barry Barnes was a highly esteemed problem composer who edited the #2 section of *The Problemist* for 33 years and who gave valued service to the FIDE Problem Commission for a significant period of time. In this way he established contacts and enduring friendships across the world. We wish to honour his memory by inviting composers *from all countries* to submit their entries to this tourney. Barry's reputation essentially depended on his #2 output and so it is this genre of composition that is sought.

**Stipulation:** Direct mate two-movers are required, using only conventional force, which feature the *thematic* use of one or more black king batteries. The use of the bK battery to administer check to the wK has been extensively researched; problems of this type are *excluded* from this competition.

### Example 1 Valery Shanshin

1 Pr *harmonie-aktiv* 2014



#2

1.Ra3? (>2.Se3/2.Qxf3) but **1...Kf5!** opens the lines of bRe8 and bBc6 to defeat the double threat.

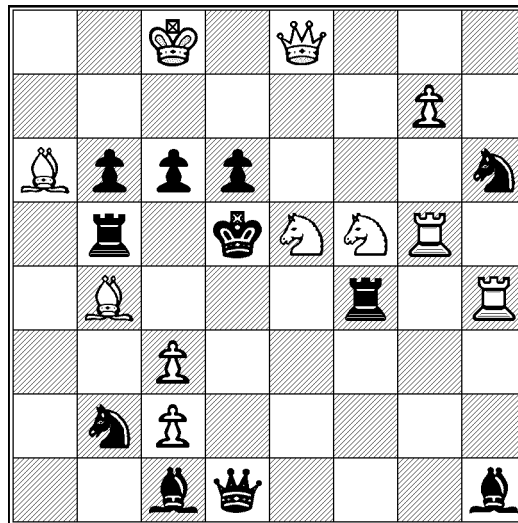
1.d5? (>2.Se3) **1...Kf5** 2.Qxf3 (2.Se3? Rxe3!) but 1...Se6! (2.Re5??)

**1.Se5!** (>2.Qxf3) **1...Kf5** 2.Se3 (2.Qxf3? Bxf3!)

## Example 2

Pavel Murashev

1-2 Pr Problemist Ukraini 10 JT 2014



#2

1.e5~? (>2.Se3) but **1...Kc4!** (2.Sxd6? Qxd6! – 2.Qxc6? Bxc6!)

1.Sd7!? **Kc4** 2.Sxb6 and 1...Rxf5 2.Sf6 but 1...c5!

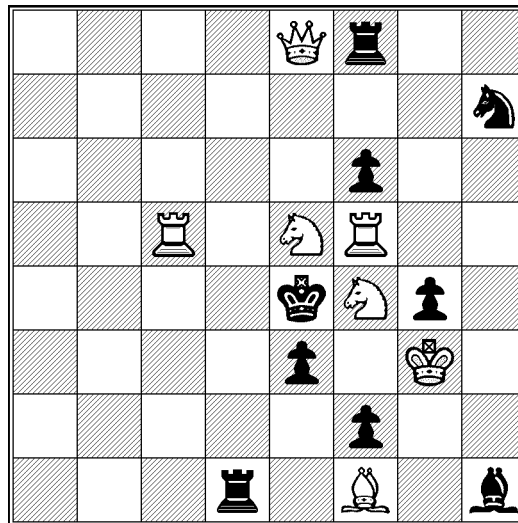
1.Sd3!? **Kc4** 2.Sxd6 (d1-d6 is pre-closed) and 1...Rxf5 2.Rd4 but 1...Qg4!  
pins wSf5 (Note that 1.Sd7!? pre-closed this pin line!)

**1.Sf3!** (>2.Se3) **1...Kc4!** 2.Qxc6 (h1-c6 is pre-closed) and 1...Rxf5 2.Qe4.

### Example 3

### Valery Shanshin

1 Pr 64-Shakhmatnoe Obozrenie 2017

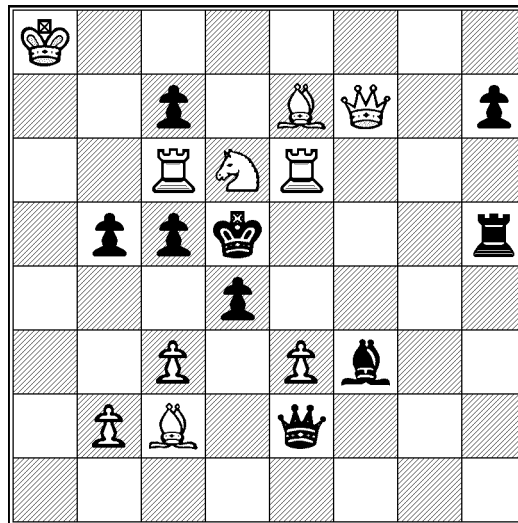


#2

Set play: **1...Kd4** 2.Rc4 (2.Sc6? Bxc6!) and **1...Kxf5** 2.Qg6 (2.Sed3? Bd5!)  
1.Sfd3? (>2.Rf4) **1...Kd4** 2.Qa4 and **1...Kxf5** 2.Sf3 (2...Rd5??) but 1...e2!  
**1.Sg2!** (>2.Rf4) **1...Kd4** 2.Sc6 (2...Bxc6??) and **1...Kxf5** 2.Sd3 (2...Bd5??)

## Example 4 Colin Sydenham (v-Daniel Papack)

2 HM *L'Échiquier Belge* 1988



#2

Any wS move grants a flight to c4. This defence opens two black batteries; bBf3 pins wRc6 and bRh5 guards c5. Thus 1.S~? (>2.Rxc5) Qc4 2.Qxf3 is defeated by **1...Kc4!**

1.Sf5!? (>2.Rxc5) **1...Kc4** 2.Re4 shuts off bBf3 but 1...Qc4! (2.Qxf3??)

**1.Se4!** (>2.Rxc5) **1...Kc4** 2.Re5 shuts off bRh5 and 1...Qc4 2.Sf6.

